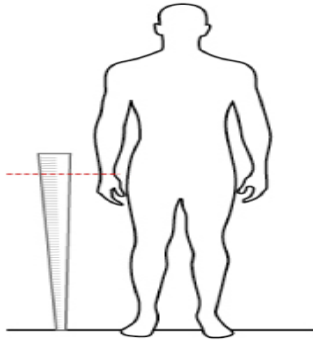
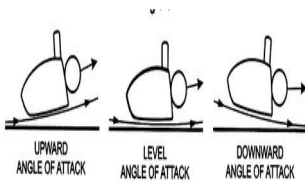


# Driver Fitting

At Chesterfield Custom Fit Golf we will fit you for the -

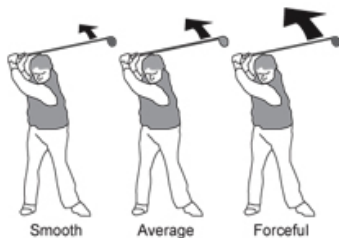


Correct **length** of club. Length is initially determined with a wrist to floor measurement not your height. Club length is key for on centre hits and accuracy. A shot half an inch off centre can cost **10 yards** in distance. The average driver length on tour is **44 inch**, most off the shelf drivers are **45-46 inches**.



**Loft** is a major factor in driver fitting; this is based on swing speed vs. angle of attack. Most off the shelf drivers are 10.5 deg that requires a swing speed of **100 Mph** and a level angle of attack. If your swing speed vs. angle of attack doesn't fit with your current driver, you could be losing distance due to a too high or too low ball flight.

Release



Transition

**Shaft.** The flex of a shaft needs to match each individuals swing dynamics. Players with higher spin speeds and a more aggressive swing generally need a stiffer flex of shaft, as golfers with a smoother tempo and slower swing speeds are more suited to a softer & lighter shaft. But it's not that simple, there are other factors involved. We also look at how you flex the shaft at different points of your swing, we call them your transition, tempo and release. All these parameters need to match your own personal swing motions.

**You will not get these specifications buying off the shelf drivers. But you will at Chesterfield Custom Fit Golf**